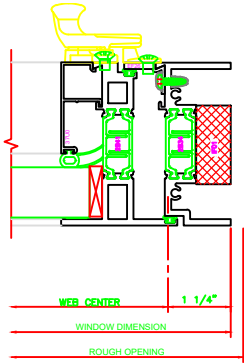
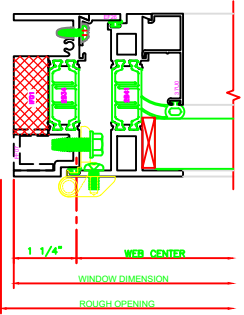


444 JAMB  
325 FIXED \ CASEMENT OUT  
4-BAR ARMS

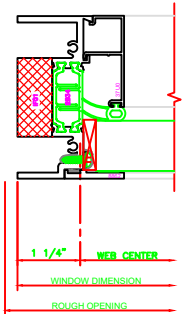


445 JAMB  
325 FIXED \ CASEMENT OUT  
CAM LOCKS

**ERECTOR NOTE**  
THE HINGED JAMB FRAME SHALL BE INSTALLED PLUMB. ALL HINGES SHALL BE SECURELY BLOCKED AND ANCHORED TO THE CONDITION THROUGH THE HINGES OR AS CLOSE AS POSSIBLE TO THE HINGES.

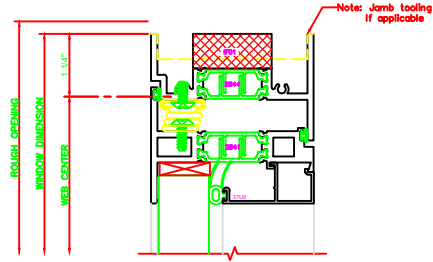


446 JAMB  
325 FIXED \ CASEMENT OUT  
BUTT HINGES

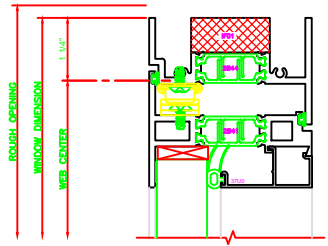


403 JAMB  
325 PROJECT OUT \ FIXED

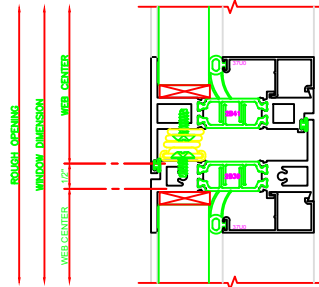
140 HEAD  
325 CASEMENT OUT  
4-BAR ARM



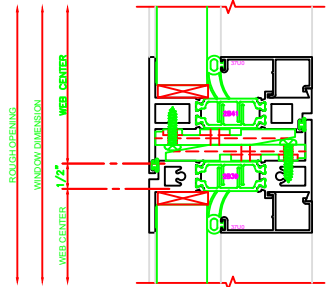
141 HEAD  
325 CASEMENT OUT  
BUTT HINGES



542 MEETING RAIL  
325 CASEMENT OUT \ FIXED  
4-BAR ARMS



543 MEETING RAIL  
325 CASEMENT OUT \ FIXED  
BUTT HINGES



200 SILL  
325 FIXED

